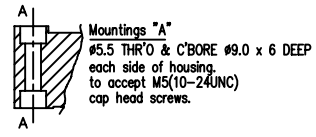


- A - Encoder head mounting points 2off for M5(10-24UNC) cap head screws (clearance holes through).
- B - Encoder head mounting points 2off for M5 screws (thread depth 12).
- C - Spring support.
- D - Machine Guideway.
- E/F - Encoder head mounting faces.
- G - Indicating parallel alignment required between encoder head and axis travel.
- H - Scale end mounting points to machine bed.
- P - Installation alignment points.

SPRING SUPPORTS ARE INTENDED FOR USE WHERE THE READER HEAD IS MOVING AND THE SCALE TUBE IS STATIONARY.
 REFER TO INSTALLATION MANUAL FOR RECOMMENDED NUMBER AND POSITONAL DETAILS OF SPRING SUPPORTS



DIMENSIONS - mm (ins")
 FOR FURTHER INFORMATION REFER TO INSTALLATION MANUAL

TITLE <i>SHG-A, SHG-TC, SHG-TS and SHG-VS series encoders (>100'')</i>			MATERIAL/ FINISH		SCALE (ON A1)		UNLESS OTHERWISE STATED :- DIMENSIONS ARE IN MM.		TOLERANCES: - 0 DECIMAL PLACES ±0.0 1 DECIMAL PLACE ±0.2 2 DECIMAL PLACES ±0.1 ANGULAR ±0.1	
DRAWN J.DRIVER 24-1-05			CHECKED		SHEET 1 OF 1		DRAWING NUMBER 316-81654		REV. ISS. 2	
Leicester NEWALL England			APPROVED		THIS DRAWING IS THE PROPERTY OF NEWALL MEASUREMENT SYSTEMS LIMITED. THE INFORMATION THEREIN MAY NOT BE LOANED OR USED WITHOUT WRITTEN PERMISSION					
REV. ISS.	DATE	C.N.No.	ALTERATION	REV. ISS.	DATE	C.N.No.	ALTERATION			
2	27-7-11	ECN9185	SPRING SUPPORT CHANGED, WHITE SCREW REPLACED WITH RED END CAP. RICK HARVEY. DPO							
1	29-9-06	ECN8743	DIMENSIONAL CHANGE 28.5 WAS 28.0 (Width). RICK HARVEY. JFD							